

Problem Statement 2009-1

You are located at a newly developing mine in Northern Walker County. This mine began driving three entries into an out cropping seam of Black River coal. They had developed four crosscuts deep when a problem occurred last night on the owl shift. Three men were working when a fire developed in the Number 1 face area. One man came outside and called for help. He was afraid to reenter the mine.

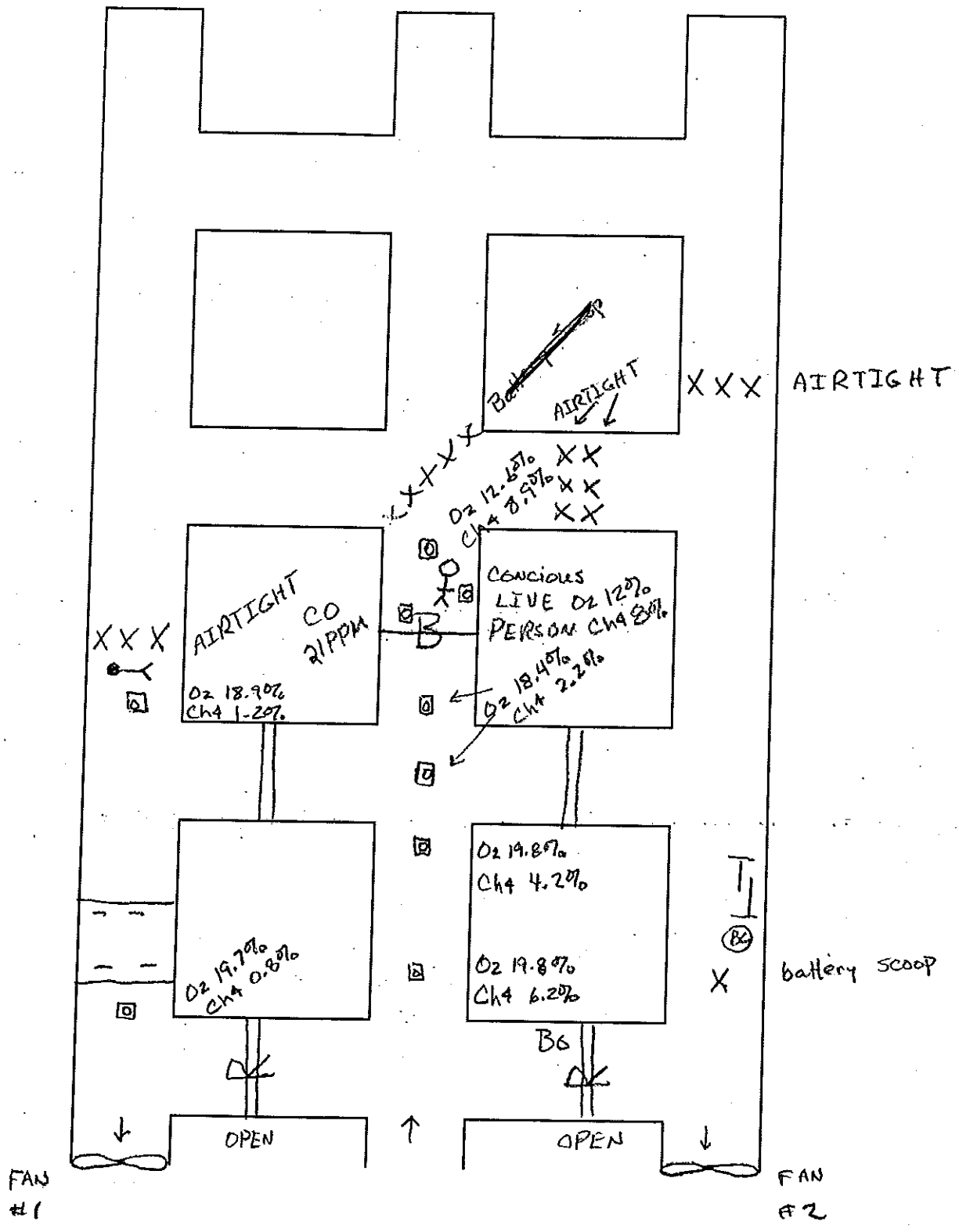
The mine is being ventilated by two permissible fans, one located in the mouth of Number 1 entry and the other in the mouth of Number 3 entry. Both are currently running exhausting. You are located in the first crosscut just inby the fans.

The map is up to date. Back up teams are present. Medical teams are on the way. You may begin when ready.

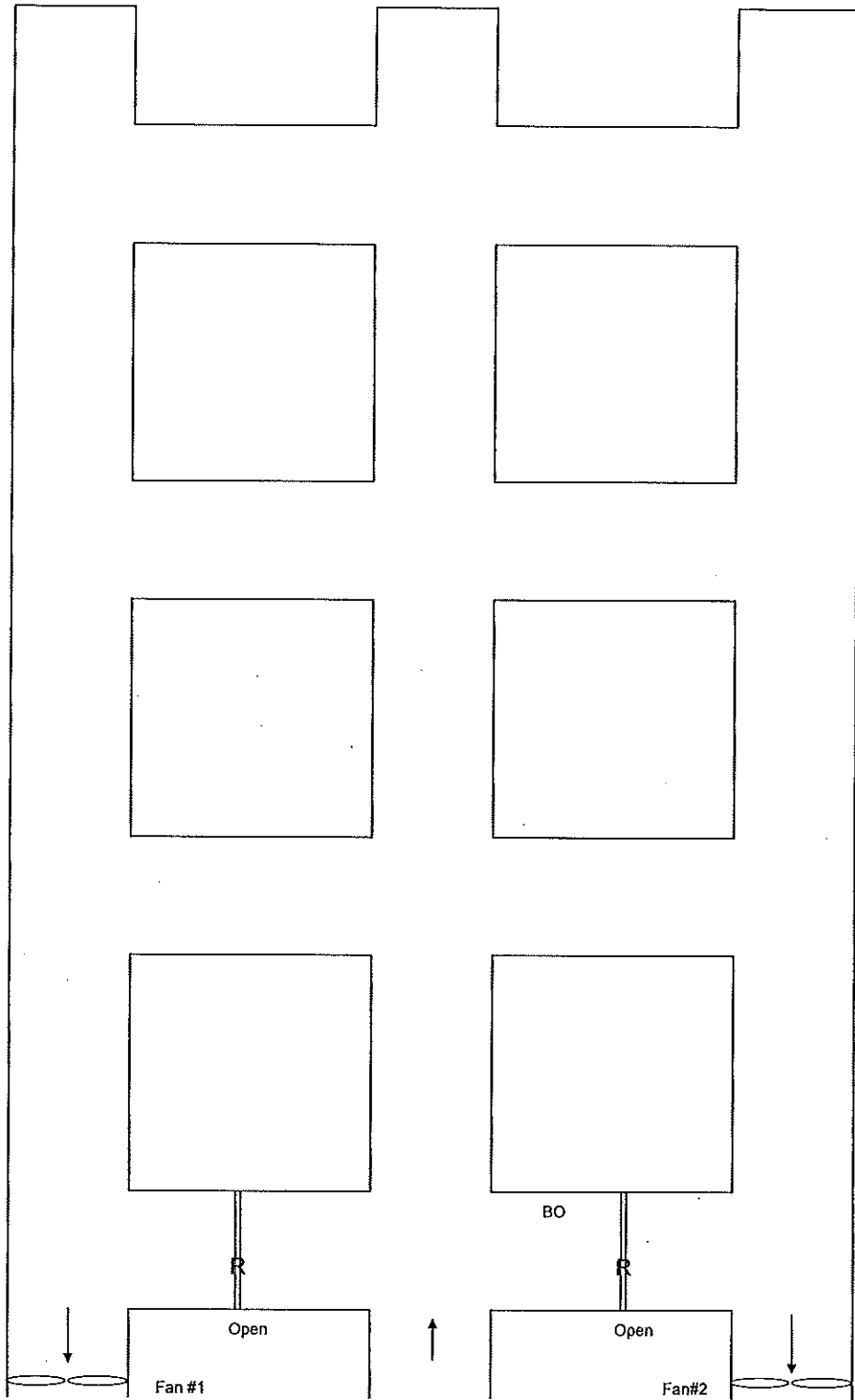
Problem 2009-1

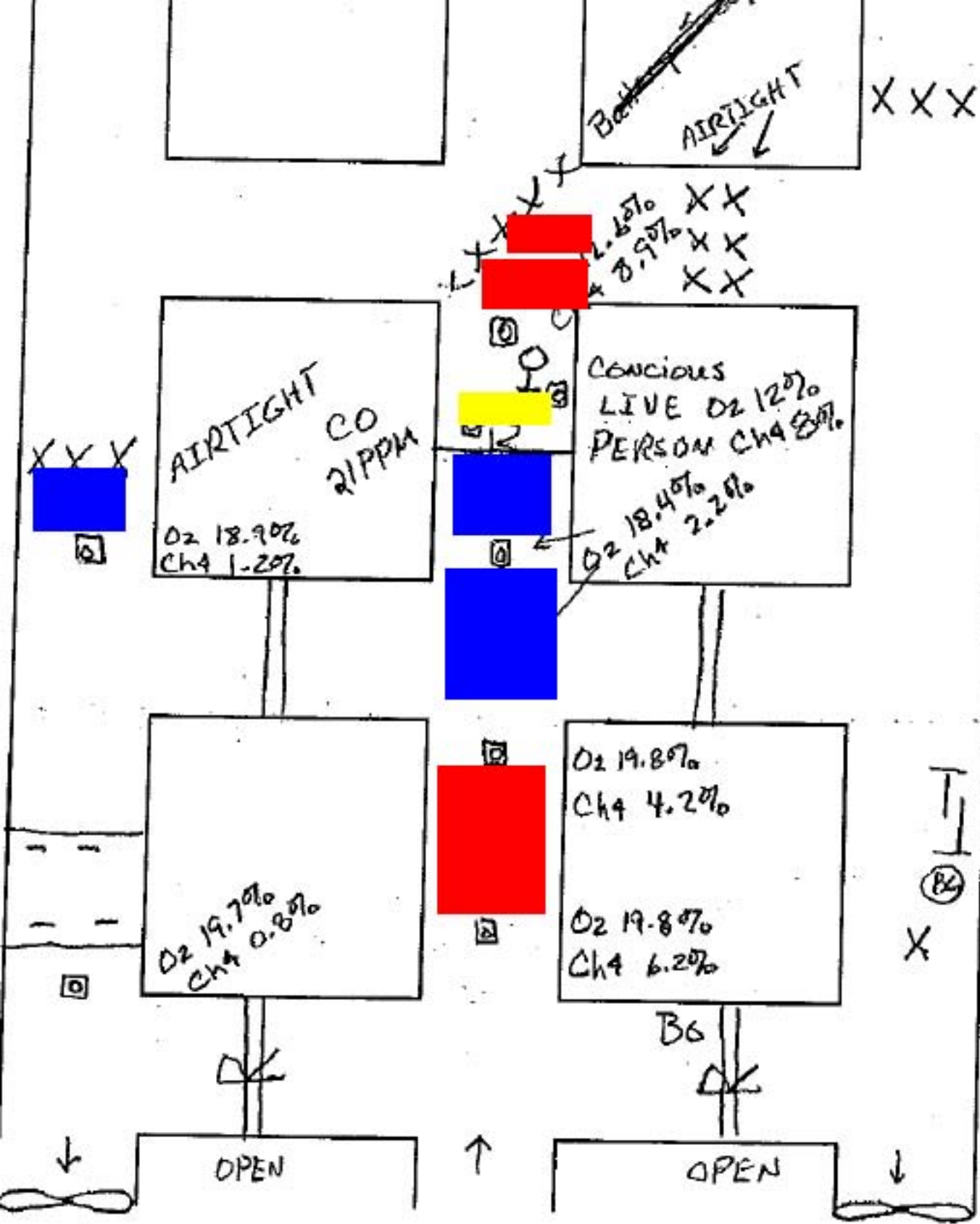
Rescue any survivors. If found, leave bodies where they can be recovered by bare face teams.

The two fans may be stopped, re-started, or reversed by contacting the command center. It will take two minutes to reverse a fan. A fan that is stopped will not exhaust or intake air while stopped.



2009-1





AIR TIGHT

This is a short, but very good problem about extent of gases. This problem would not be a quitter because of the below 12.1 O_2 just in by the 21 ppm CO. The CO stops at the 12% O_2 & 8% CH_4

battery scoop

explosive red

low O_2 blue

evidence of fire

yellow

F2