

Practice Problem #1

Thank you for responding to our call for help. I am the superintendent of the number 1 mine. You are located at #55 crosscut Fresh Air Base, Previous Mine Rescue Teams have explored up to this point and established this Fresh Air Base. We are not sure what happened but at 12:30 PM this afternoon we had a spike in the pressure recording chart for the main fan followed by a call from one of the five man crew stating that he heard a loud noise and smoke was filling the section. He was ordered to evacuate to the surface but never showed up, Rescue Teams were hoping that he made it to the refuge alternative but it has not been deployed and the rescue team erected temporary stopping at this point We need you to explore the last 300' in by the Fresh Air Base. Rescue any survivors and bring them safely to the Fresh Air Base. This mine has an exhausting fan producing 275,000 cfm it is intakeing up the number 3 entry and exhausting out numbers 1 and 2. It is currently off and can be started by asking me for permission. Once started it can not be stopped stalled or reversed. This mine has a history of methane and bad top. This is all the information I have when you are ready to begin I will give you the map of the last 300' after you start the clock Good luck and Be careful.

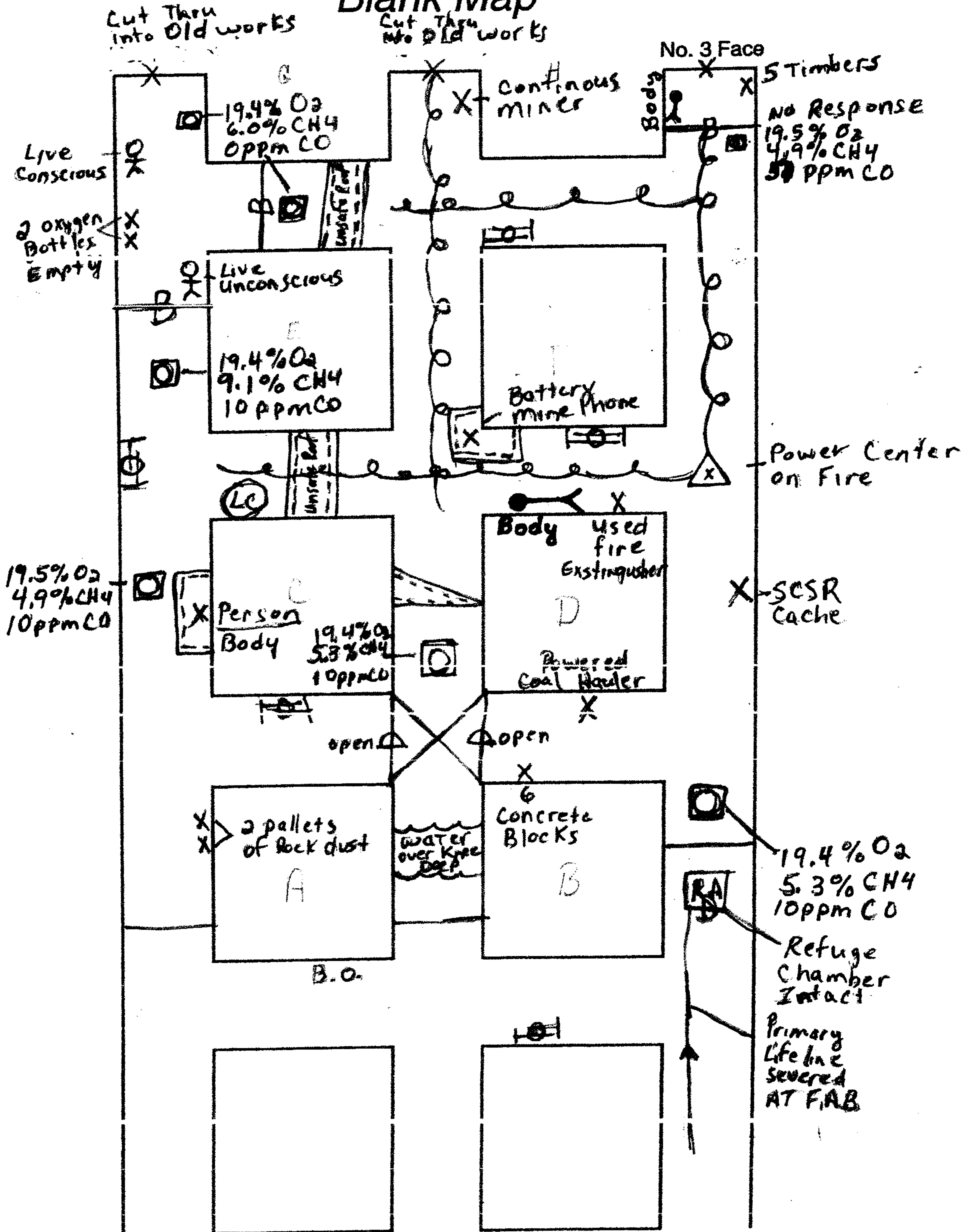
Team Statement

1. Explore all areas of the mine that can be done so safely
2. Account for all missing miners
3. Bring all survivors to the Fresh Air Base
4. LEAVE MINE FOR SURFACE RECOVERY if possible

Setup Map Practice #1

July 29, 2004

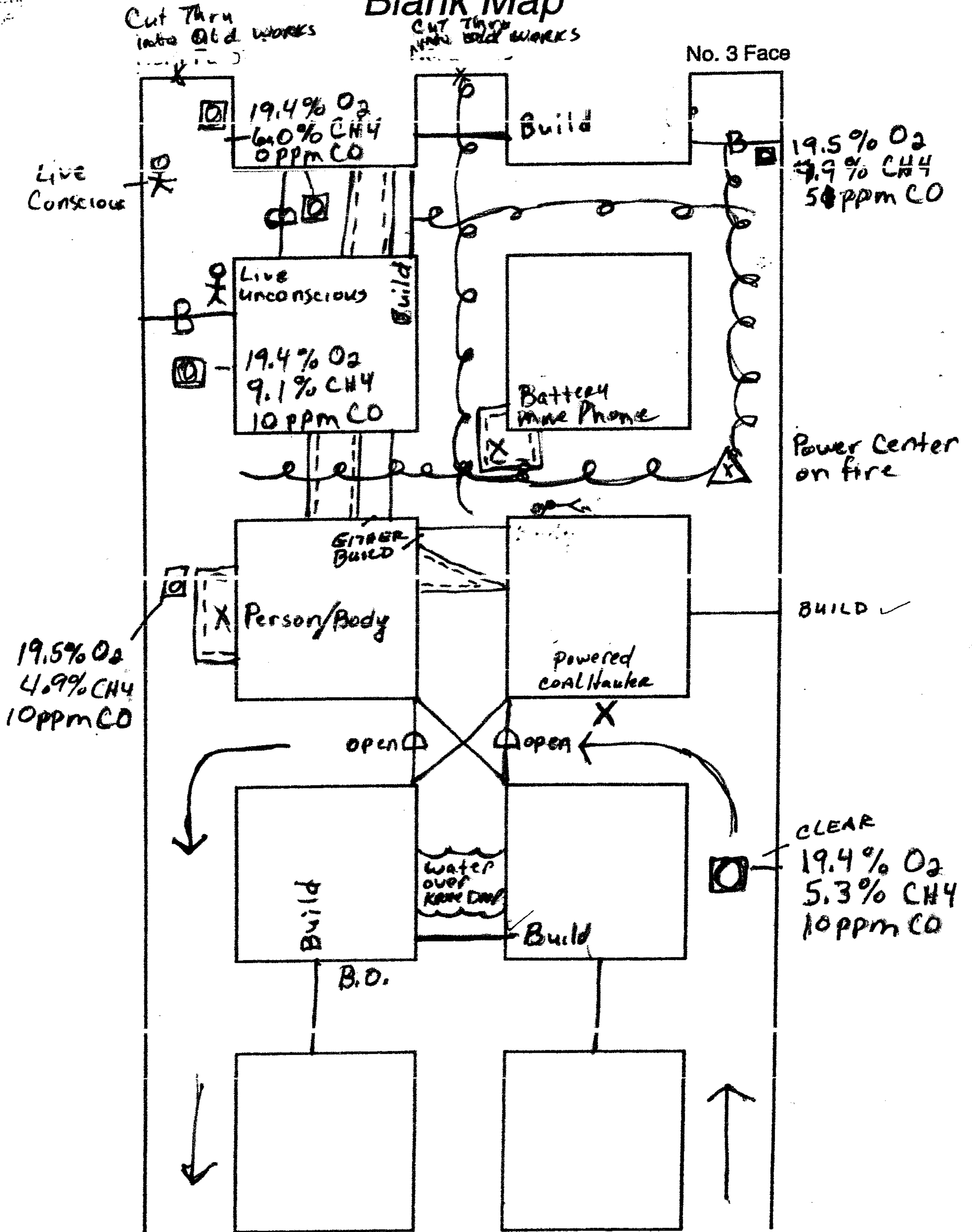
Blank Map



1 SE VENT

July 29, 2004

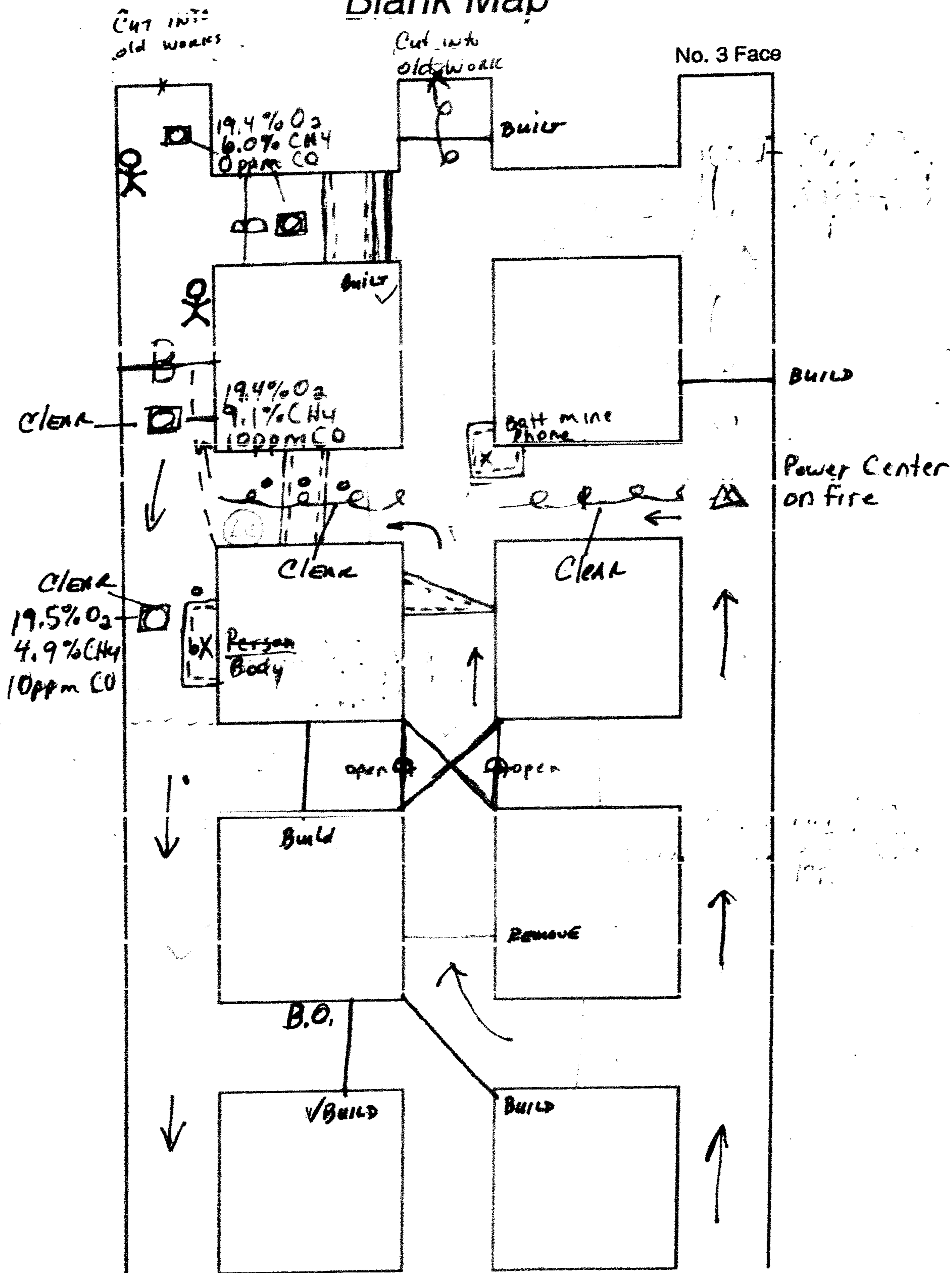
Blank Map



July 29, 2004

OPTIONAL 3RD VENT

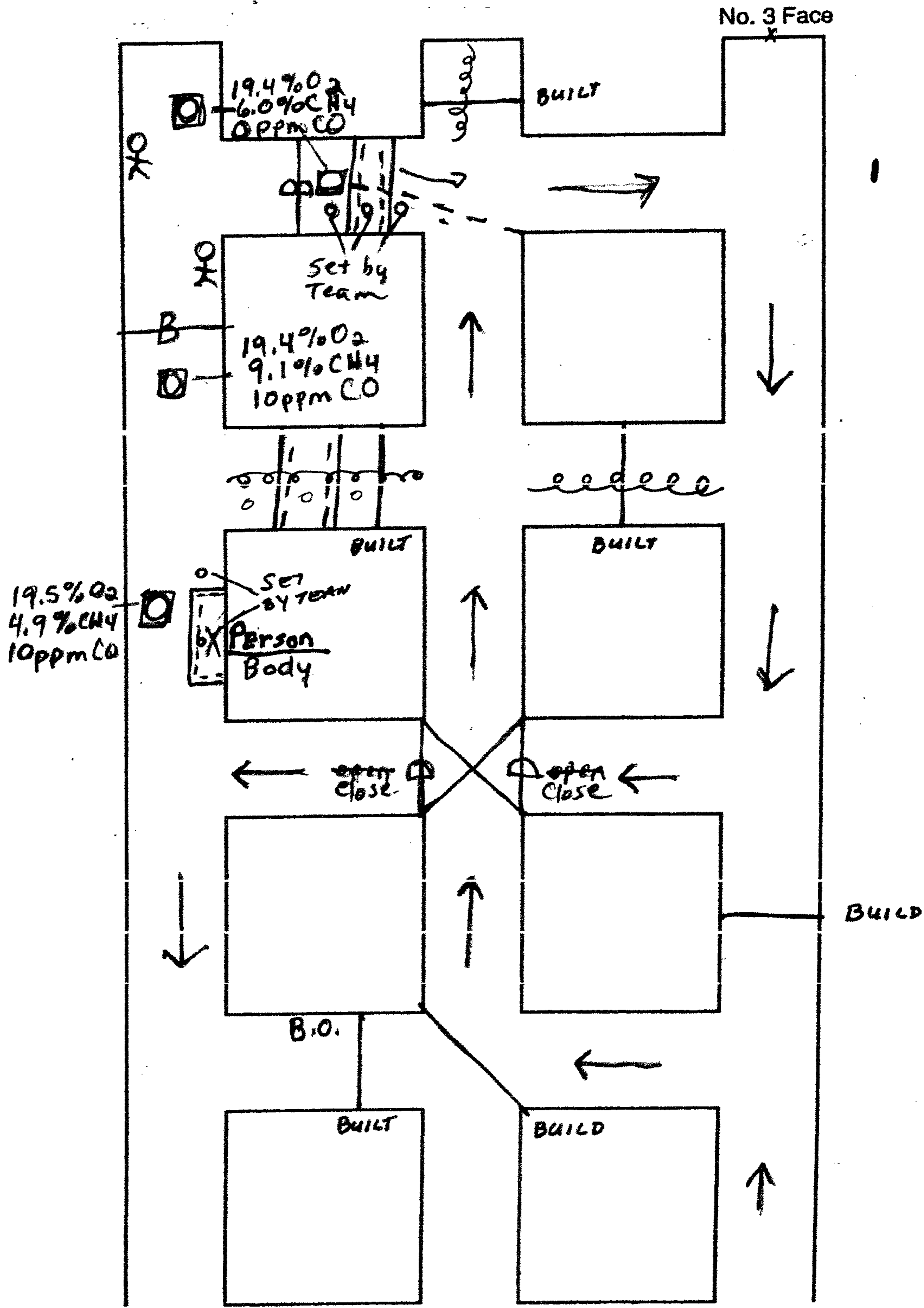
Blank Map



July 29, 2004

3RD VENT

Blank Map



Team STOPS

July 29, 2004

Blank Map

No. 1 Face

No. 2 Face

No. 3 Face

