

To the discussion about rescue shelters on the pages [www.usmra.com](http://www.usmra.com) we would like to contribute by the experience from Czech Republic.

For these reasons we use so called Re-supply stations. There are build very easy either in the gallery with the through air stream or in the niche which is ventilated by diffusion. Therefore is the depth of it 5 m. On these Re supply stations is adjustment the necessary equipment for the appropriate rescue.

The schema of two possibilities design of Re supply station are on the enclosed pictures.

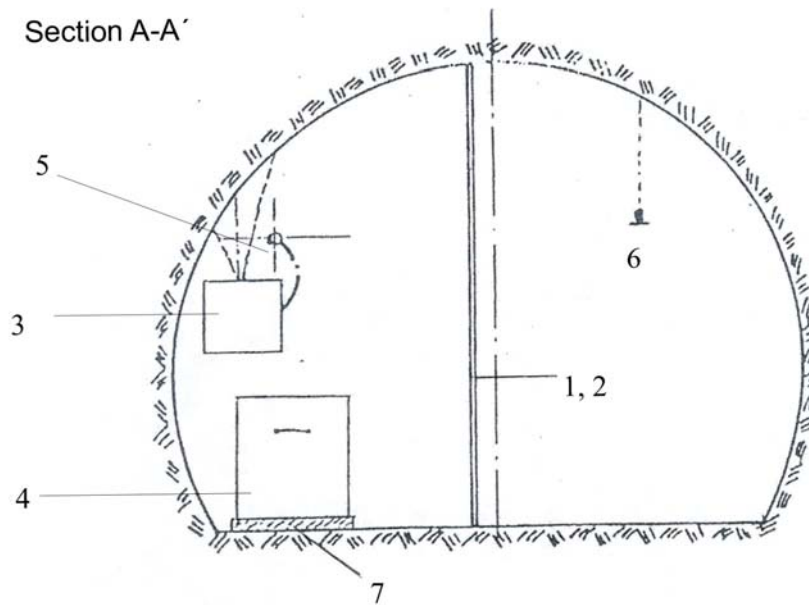
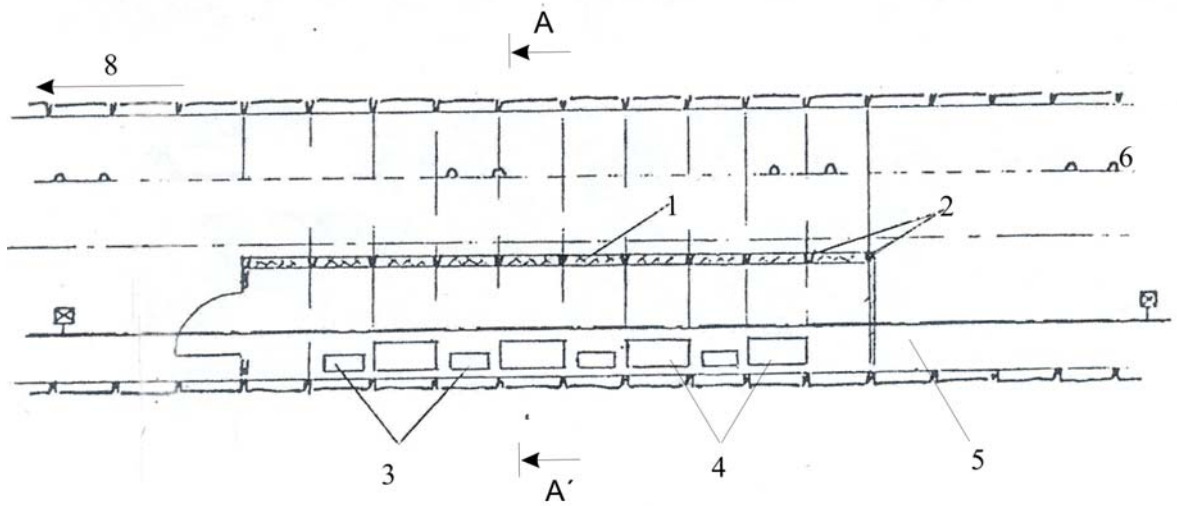
It acts about very simple arrangement capital unpretentious. It is possible build it practically in all parts of mine. The dislocation of Re supply stations we determinate according to distance of workplace a they are part of rescue plans. The air from air distribution system is used if in relevant sector originate irrespirable atmosphere.

Where this distribution system is not fulfillment it must be substituted by compressive bottle with respective reduction of pressure.

The report was prepared by Eng. J. Chovanec PhD., Technical University Ostrava, Czech Republic.

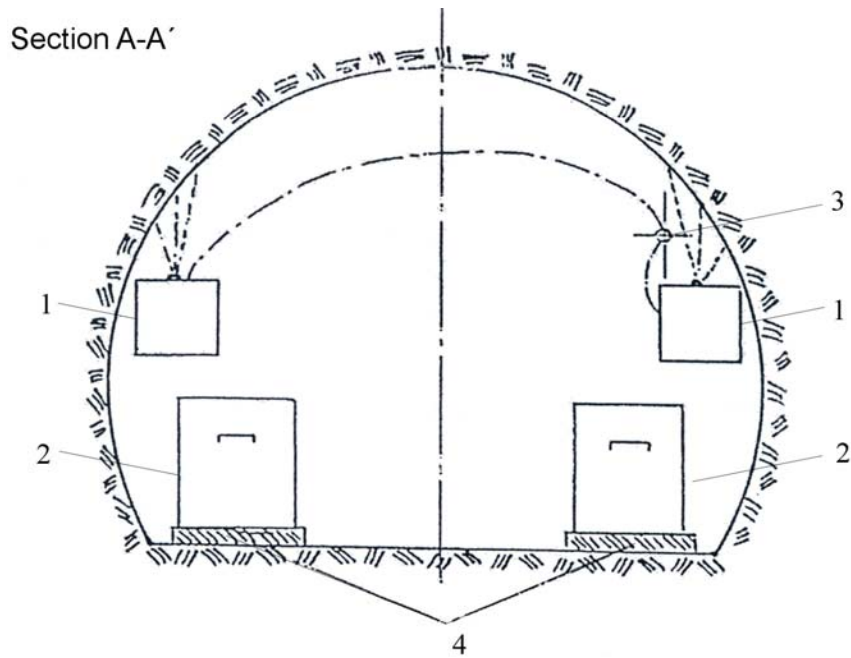
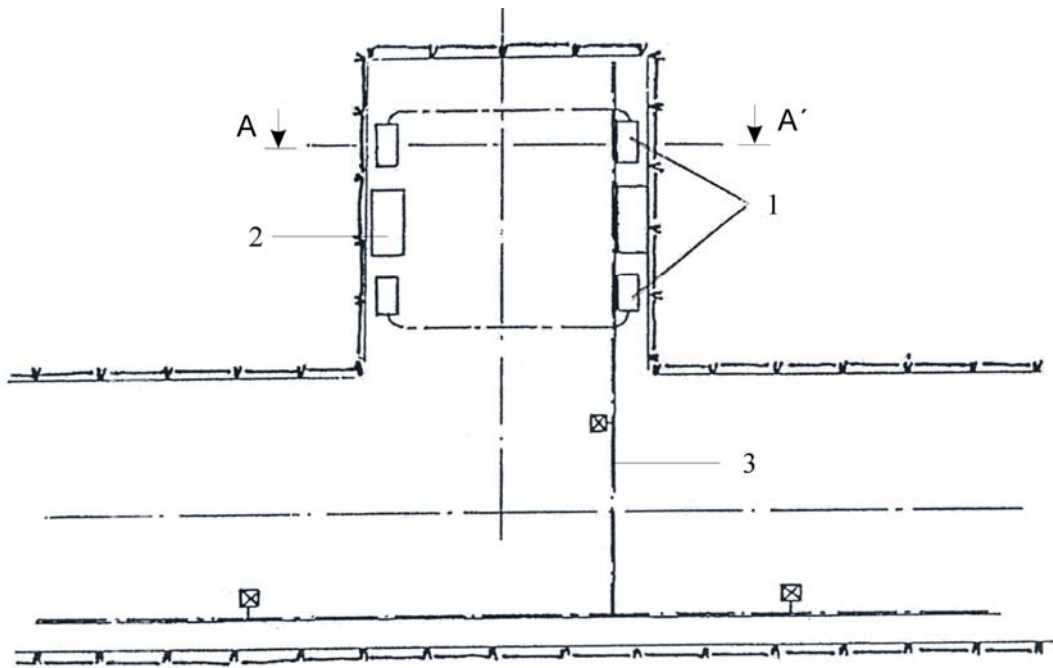
If this report will be useful you can publish it in your mining journals.

## **Re-supply station in transit mine gate**



1. Fence network as far as it is possible placing
2. Shoring of reinforcers,
3. Air distribution systems in 3/4inch conduit with 10 turnings with valves. Connect hose diameter 6 mm with mask or hemi mask
4. Box with stored self rescue apparatus
5. Air pipe line inside diameter 100 mm, limit pressure 1,6 MPa
6. Single track groove.
7. Insulative layer
8. Direction of streaming of fresh air

### **Re-supply station in blind mine niche**



1. Air distribution system in 3/4inch conduit with 10 turnings with valves. Connect hose diameter 6 mm with mask or hemi mask
2. Box with stored self rescue apparatus
3. Air pipe line inside diameter 100 mm, limit pressure 1,6 MPa
4. Insulative layer